



Automating Data Management and Documentation using Shared Metadata Across Projects

doi:10.5281/zenodo.3334832 | © BY-SA 4.0

ESRA 2019, University of Zagreb | D31

18th July 2019

Daniel Bela (LifBi/NEPS)

1 Background

2 New Developments

3 Discussion

1 Background

2 New Developments

3 Discussion

About NEPS

LifBi's main task:

- provide infrastructure and data for longitudinal educational research
- ... primarily by conducting surveys, producing useable data, and providing it to the Scientific Community
- continue to conduct the German National Educational Panel Study (NEPS), a former project of the Federal Ministry of Education and Research at the University of Bamberg

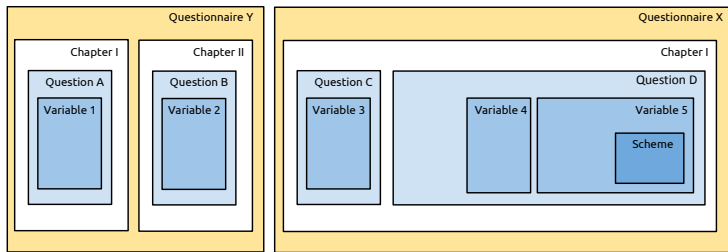
NEPS

National Educational Panel Study

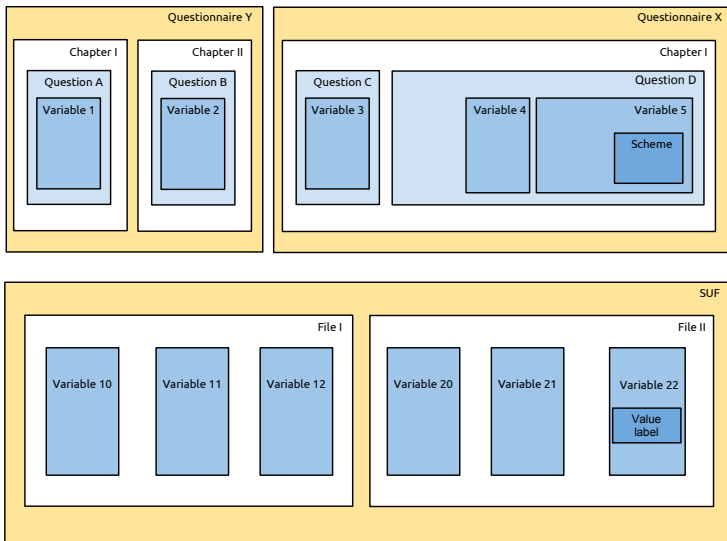
- started 2008, first field work 2009, first Scientific Use File late 2011
- large scale panel study, running in six panel cohorts with (at least) one survey per year, with a total of 100 000 respondents

to date: 64 Scientific Use Files published, spanning 57 survey waves from 221 survey instruments

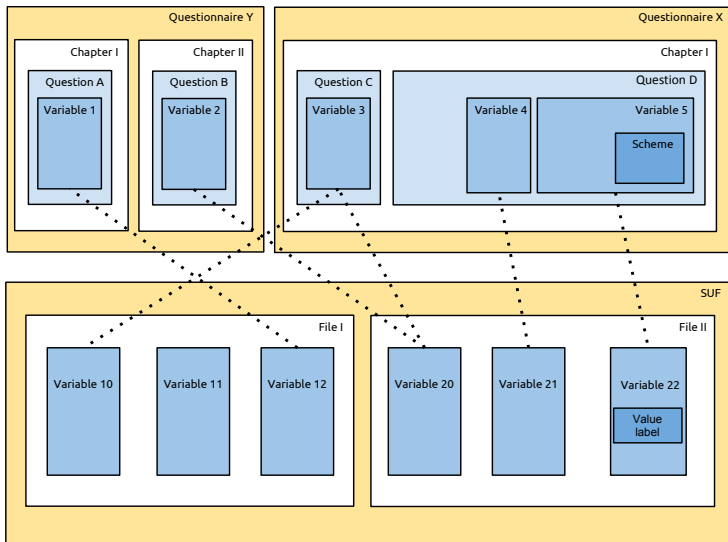
NEPS' Integrated Metadata System (simplified)

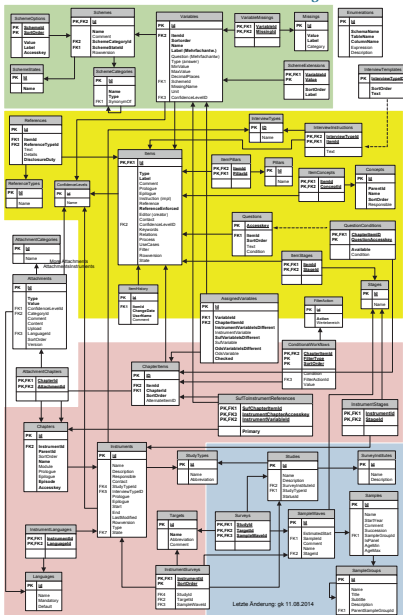


NEPS' Integrated Metadata System (simplified)



NEPS' Integrated Metadata System (simplified)





NEPS' (Meta)Data Management Lifecycle

(metadata system is covering **alert** parts)

- 1 conceptuation phase
- 2 item development
- 3 instrument compilation
- 4 field work
- 5 data delivery from field
- 6 **instrument documentation**
- 7 **instrument translation**
- 8 internal distribution
- 9 **data processing**
- 10 **data edition**
- 11 data anonymisation
- 12 dissemination

1 Background

2 New Developments

3 Discussion

Incorporating Additional Studies into th System

After foundation of LIfBi,...

- ... NEPS was no longer the only study we conduct
- ... expectations to handle metadata for other studies had arisen
- ... it was clear that our metadata structures hat do adapt to new challenges

Incorporating Additional Studies into the System

Lifecycle Adaptations: (*emphasized* entries have changed)

- 1 **conceptuation phase**
- 2 item development
- 3 instrument compilation
- 4 field work
- 5 data delivery from field
- 6 **instrument documentation**
- 7 **instrument translation**
- 8 internal distribution
- 9 **data processing**
- 10 **data edition**
- 11 data anonymisation
- 12 dissemination

Educational Landscape of Upper Franconia

BiLO

Study at a Glance:

- spatial study in Upper Franconia (northern Bavaria)
- surveying educational institutions as well as population
- aim: get insights into the interplay between local “supply” and “demand” with regards to educational decisions

- requirement: additional CAWI questionnaire to be administered in house

Educational Landscape of Upper Franconia

BiLO

Lifecycle Adaptations: (*emphasized* entries have changed)

- 1 **conceptuation phase**
- 2 item development
- 3 ***instrument compilation***
- 4 ***field work***
- 5 data delivery from field
- 6 **instrument documentation**
- 7 **instrument translation**
- 8 internal distribution
- 9 **data processing**
- 10 **data edition**
- 11 data anonymisation
- 12 dissemination

Refugees in the German Educational System

ReGES

Study at a Glance:

- panel study of refugees
- aim: better understanding of integration processes into the educational system

- requirement: multi-lingual survey instruments in eight different languages

Refugees in the German Educational System

ReGES

Lifecycle Adaptations: (*emphasized* entries have changed)

- 1 conceptuation phase
- 2 item development
- 3 *instrument compilation*
- 4 *instrument translation*
- 5 field work
- 6 data delivery from field
- 7 *instrument documentation*
- 8 internal distribution
- 9 *data processing*
- 10 *data edition*
- 11 data anonymisation
- 12 dissemination

1 Background

2 New Developments

3 Discussion

Things to Come, and Discussion Topics

Further steps for our metadata system:

- *item development*

Discussion topics:

- What's the use of opening the system to other studies? And for whom?
- What's the use of sharing metadata between studies? And for whom?

Things to Come, and Discussion Topics

Further steps for our metadata system:

- *item development*

Discussion topics:

- What's the use of opening the system to other studies? And for whom?
- What's the use of sharing metadata between studies? And for whom?

Questions?

Please discuss!



Wilhelmsplatz 3
96047 Bamberg, Germany

Phone: +49 951 863-3428
Fax: +49 951 863-3405
daniel.bela@lifbi.de

www.lifbi.de



License

This presentation is available under the following license:

© Creative Commons Attribution Share-Alike 4.0.

This does not apply to the following material used in this presentation:

the Linux Biolinum and Source Code Pro font families,
as well as all used icons from the Font Awesome font
(all licensed under SIL Open Font license 1.1)

the logo of the Leibniz Institute for Educational Trajectories:

